

FRACTIONS

INSTRUCTIONS

Work through the questions below.

1. Which cake is $\frac{1}{4}$ black?



2. What fraction of the marbles are black?

a. $\frac{5}{12}$

b. $\frac{5}{7}$

c. $\frac{7}{12}$

d. $\frac{7}{5}$



3. Which of these fractions shows “two-sixths”?

a. $\frac{1}{6}$

b. $\frac{2}{6}$

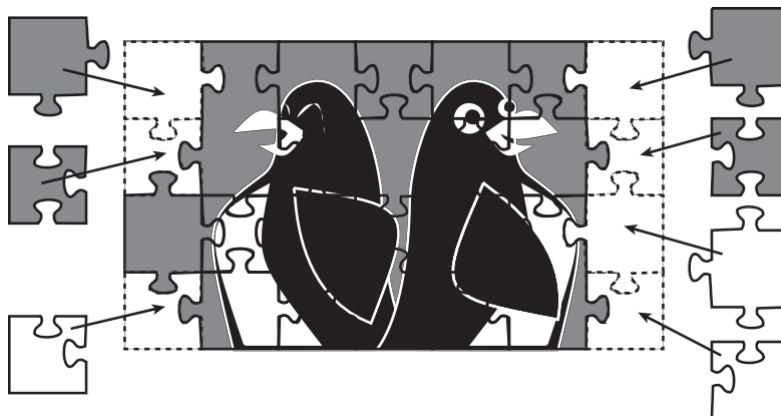
c. $\frac{21}{6}$

d. $\frac{26}{6}$

INSTRUCTIONS

Sammy was playing with a puzzle. Use the picture below to answer the following questions.

4. Sammy has 7 pieces left to put in the puzzle. What fraction of these leftover pieces is gray?



5. What fraction of these leftover pieces is white?